

How To:
Install Solidoodle Emergency Stop Switch

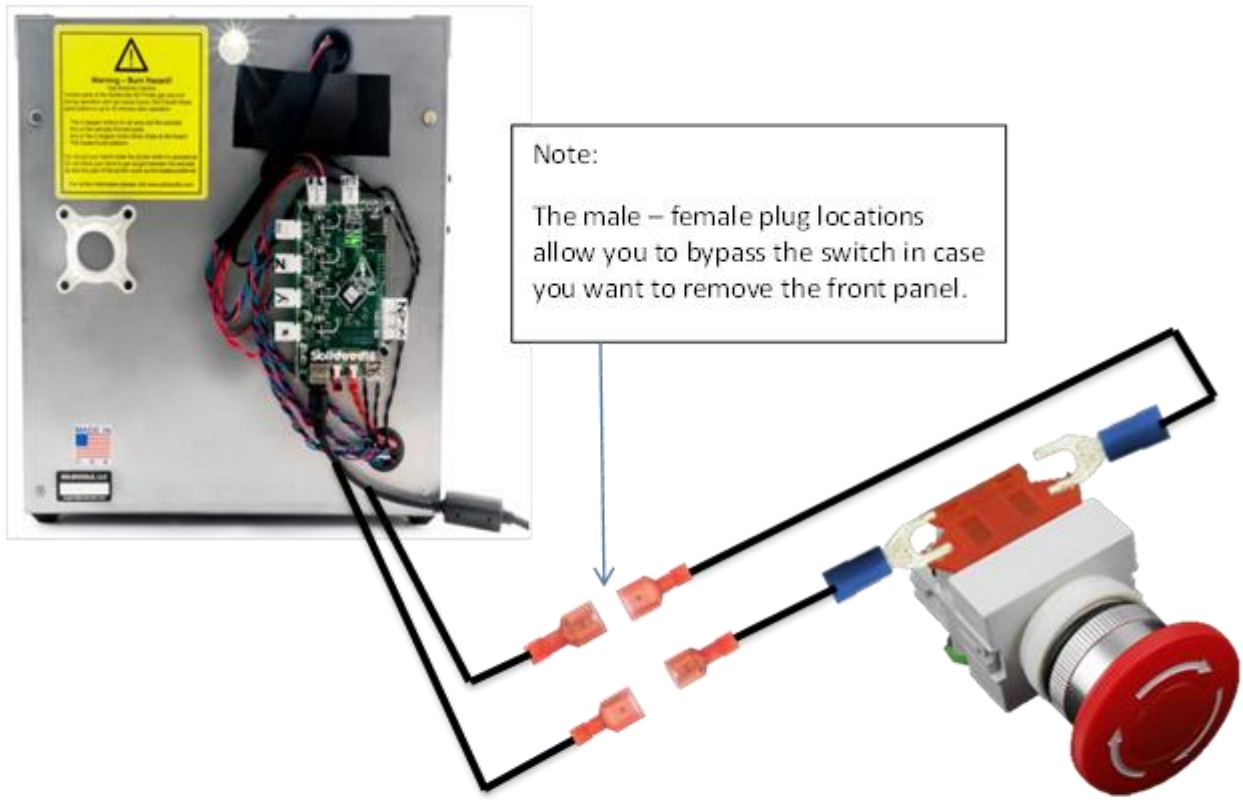


Austin Crouse

23 January 2014

This project took about 30 minutes to do and is well worth the time and money! Don't forget to unplug the power supply prior to doing any wiring to save yourself and your printer!!

A short video can be found on [YouTube](#) giving a quick tutorial and what this project entails. Below you can see the wiring diagram for the emergency stop button that was mentioned in the video.

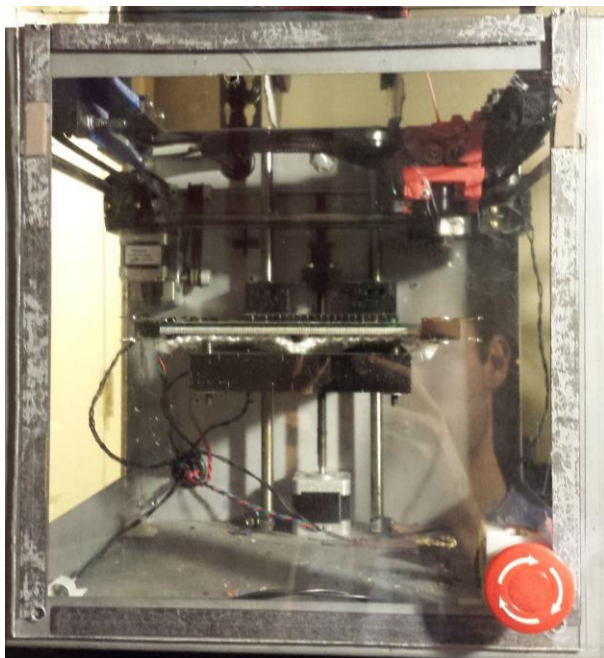


Disclaimer: I am not liable if you hurt yourself while making this modification. You may make this modification under your own risk. Be sure to unplug the PSU from the wall and let the power drain before wiring anything!!

Final BOM for the emergency stop button with clickable links. Be sure to check if you have some of these parts sitting around to cut cost buying a bunch of connectors.

Emergency stop button bill of materials

Item	Qty.	Price	Total
Emergency Stop	1	\$4.71	\$4.71
2ft 18 AWG wire	0.03	\$10.83	\$0.32
2 Insulated female connector	0.02	\$6.59	\$0.13
2 Insulated male connector	0.02	\$6.25	\$0.13
2 fork terminal	0.02	\$9.00	\$0.18
4 shrink wrap pieces	0.01	\$9.25	\$0.09
Total		\$46.63	\$5.56



Above are final pictures of the emergency stop button installed. I used a step drill bit to drill the **7/8" through hole** for the button.